

CLS Logistics Services PLC, Ethiopia



Exclusive agents of





Country Profile Ethiopia

- **Land mass:** 1,127,127 sq km
- **Population:** 94,352, 000 m
- **Urban Population:** 17%
- **Life expectancy:** 56
- **Religions:** Orthodox Christian, Islam
- **Main ethnic groups:** 80 different ethnic groups
- **Inflation:** 8.5%
- **Aid Flows:** \$ 550m
- **FDI:** \$ 953m
- **Main Export:** Coffee, Sesame, Flowers, Capsicum, Textiles, Live Stock





Brief History

Bolloré Africa Logistics partners in Ethiopia exclusively with CLS Logistics Services PLC.

2008: CLS Logistic Services PLC is formed & becomes the exclusive partner of SDV Transami (Bolloré) Djibouti in Ethiopia.

2009: CLS Logistic Services PLC opens its branch at the Bole International Airport Cargo Terminal.

2012: CLS occupies its new Head Quarters in Kazanchis (Zequala Building).

2014: CLS Logistics Services PLC opens new office at Kality customs yard





Our Services

Freight Forwarding

- Customs clearing Import and Export
- Air freight / Sea freight
- Road transport to & from Djibouti
- Abnormal & Heavy Lift / Project cargo
- Consolidation
- Warehousing

Transportation

- Door-to-door haulage
- Local distribution
- Preferential agreements with trucking companies
- Cargo handling / off-loading

Corridors Access

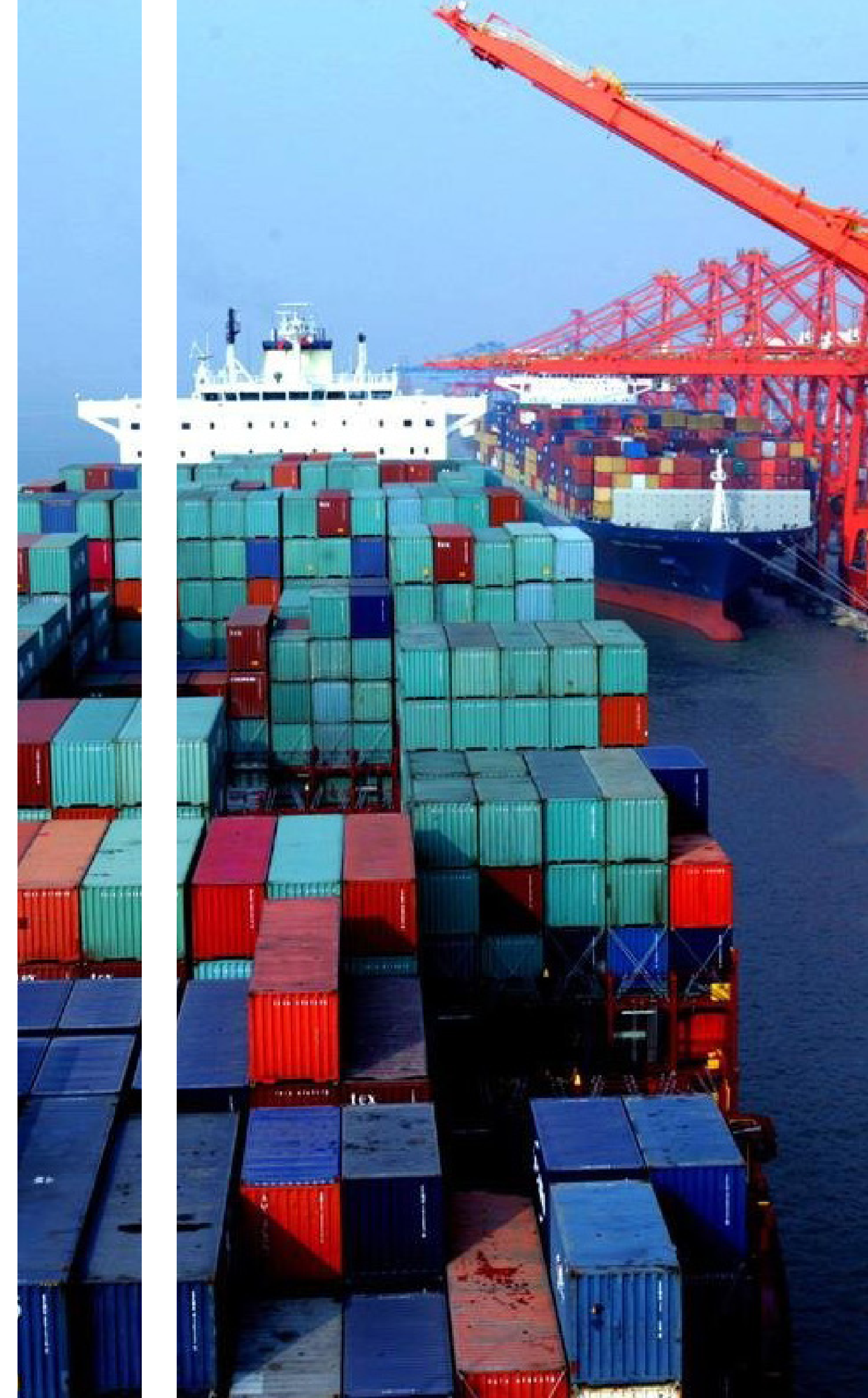
- Djibouti
- South Sudan



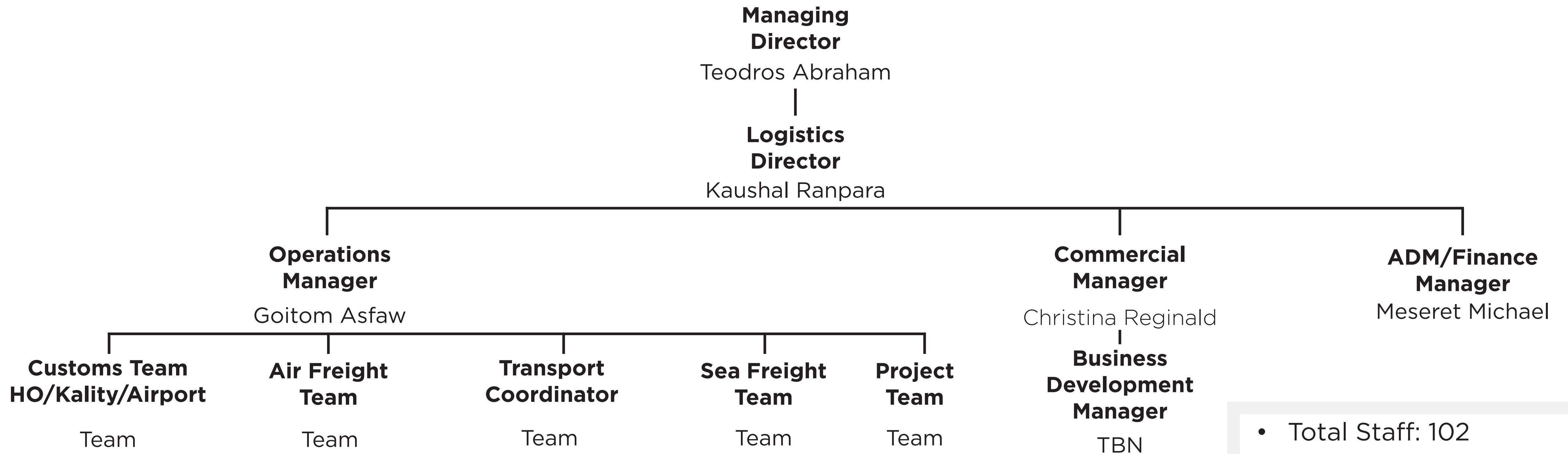


Our Volumes

- 10,980 TEU dispatched in 2016 via Djibouti
- 2,600 airfreight consignments cleared and delivered in 2016
- Own office in the airport's cargo terminal
- CLS Logistics Services PLC acts as a logistic operator and freight forwarder.



Company Organization



- Total Staff: 102
- Operations: 88
- In House: 1 (Client Office)
- Customs: 6
- Airport: 7



Djibouti Corridor

Djibouti serves as gateway Port for Ethiopia. Since 1998, the port handles 100% of Ethiopia's maritime traffic, which moves to and from Ethiopia by trucks. Over 85% of cargo discharged at Djibouti is destined to Ethiopia.

Corridor : Djibouti - Addis Ababa, Ethiopia

From	To	Mode	Distance
Djibouti	Addis Ababa	Road	930 Km





Regulations

Size restrictions:

- Payload in excess of 40t requires ERA (Ethiopian Road Authority) permit.
- Cargo units exceeding 12m length and/or 2.5m width and/or 3.2m height is to be escorted (Ministry of Transport personal/transporter escort vehicle)
- Cargo units exceeding 4.2m loaded height require EEPCo escort for route clearance (power cables & installations)

Weight restrictions:

- Containers:
Max loaded allowed per truck is 40 tons (incl. container weight).
40' DV: max weight is maximum permissible container payload.
20' DV: max weight is maximum permissible container payload, if paired on one truck maximum gross weight per container not to exceed 20tons.
- Breakbulk cargo:
Special permit from Ethiopian Road Authority is required for transports over 40tons.

Dangerous cargo restrictions:

- UN Class 1, 2 and 5 to be received on direct delivery basis from Djibouti Port. Same be escorted by Police from Djibouti port to final destination.





Import documentation

Unimodal BL:

**Dispatch process can be initiated by Bollore
Djibouti only upon receipt of transit permit (ECD)**

To Bollore DJIBOUTI

- Original BL,
- Copy of Invoice of the purchase - CIF value,
- Copy of the packing list
- ECD (Transit Permit)

To CLS Ethiopia:

- Original BL
- Original commercial Invoice, signed and stamped by supplier
- Packing list signed and stamped by supplier
- Certificate of Origin, signed and stamped by Chamber of Commerce
- Insurance premium receipt (Ethiopian insurance for Goods in Transit)
- Freight receipt
- Consignee delegation for customs clearance
- Consignee delegation to sign and collect documents and cargo
- Consignee Tin/Tax number/license/registration
- Container Deposit / Bond





Import documentation

Multimodal BL

Dispatch process will be initiated by ESL upon vessel arrival at Djibouti port.

To Bollore DJIBOUTI

No role for AL DJIBOUTI

To CLS Ethiopia:

Original BL

Original commercial Invoice signed and stamped by supplier

Packing list signed and stamped by supplier

Certificate of Origin, signed and stamped by Chamber of Commerce

Insurance premium receipt (Ethiopian insurance for Goods in Transit)

Freight receipt

Delegation for customs clearance

Delegation to sign and collect documents and cargo

Consignee Tin/Tax number/license/registration

Documents to be provided at least 7 days prior to vessel arrival





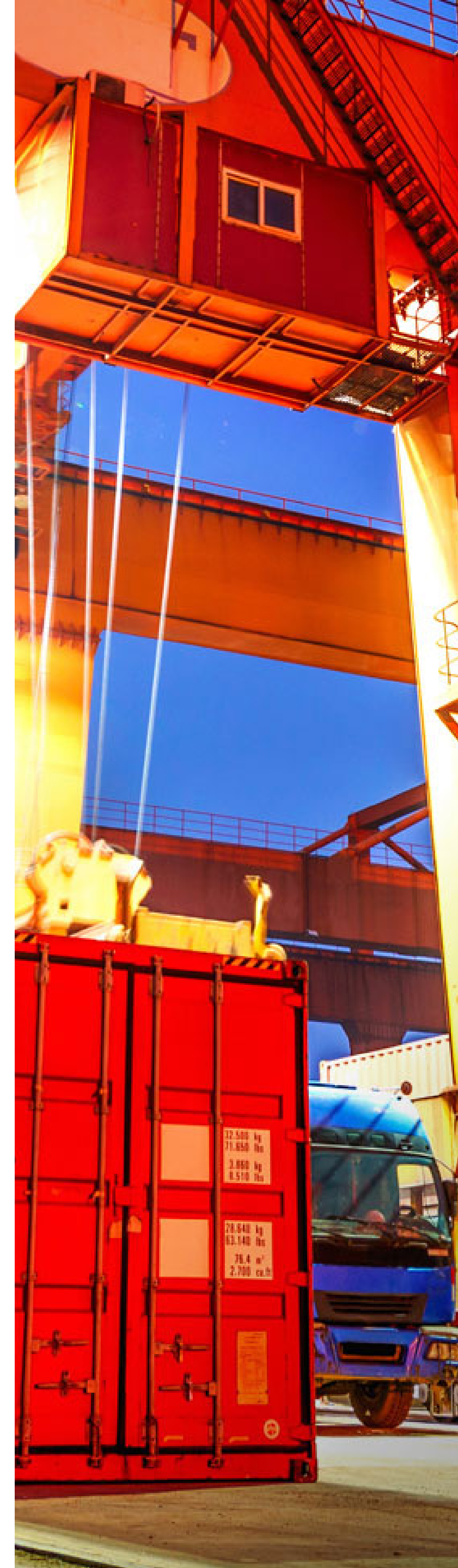
Corridor Movements - Import

Shipments with Multi-modal BL/Through BL

- If goods are imported under Letter of Credit (L/C) the use of Ethiopian Shipping Lines (ESL) is mandatory. All Ethiopian controlled imports are subject to LC. Investors and Importers may request for a waiver from shipping with ESL.
- Ethiopian Shipping Lines are issuing multimodal BL's obliging importers to load under Multimodal ESL BL's nominating ESL to transport containers from Djibouti port to several dry ports in Ethiopia (managed by ESL),
- In such cases Bollore DJIBOUTI cannot have any control of the containers at Djibouti, but CLS can assist with clearance & final delivery from Dry Ports in Ethiopia.

Shipments with Uni-modal BL

- Where 'uni-modal' exemption status has been established, Shipper/Consignee is only under obligation to ship with ESL to CFR/CPT Djibouti, and on-carriage can be arranged independently.
- With Uni-modal BL shipments - Bollore DJIBOUTI takes control at Djibouti Port. Once the transit permit (Ethiopian Customs Document) is obtained by CLS in Ethiopia, the shipment can be dispatched from Djibouti after completing local clearance procedures
- The importer has to apply for waiver from Ethiopian shipping lines to avoid shipping the containers on ESL Multi-modal BL.





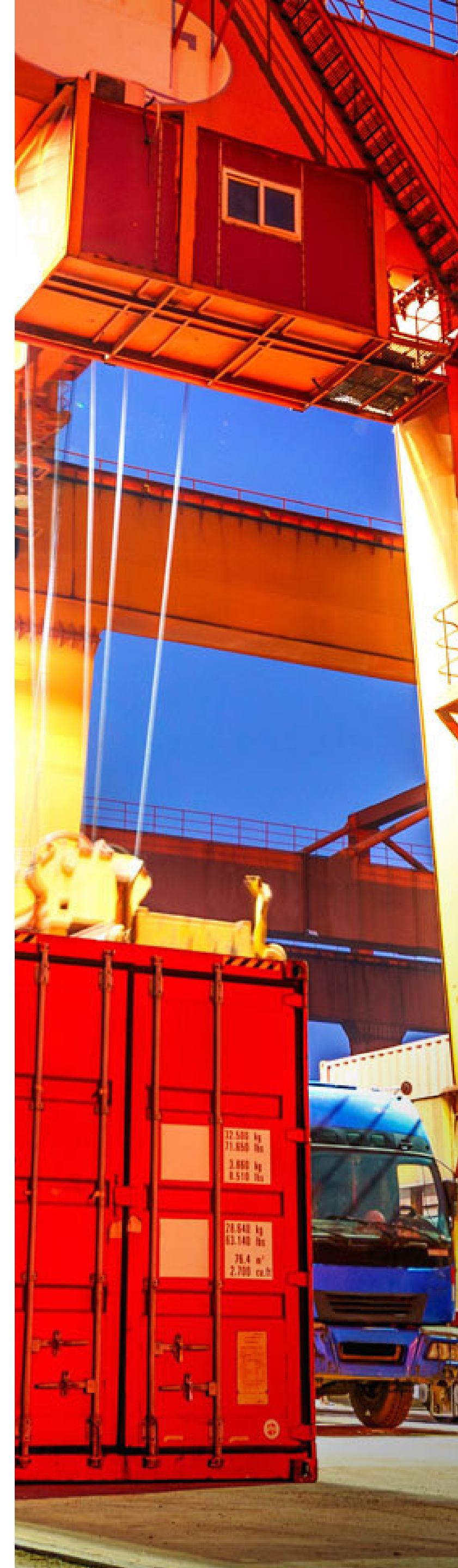
Corridor Movements - Import

Shipments with full ESL exemption

- Where full exemption status has been established, Shipper/Consignee can arrange shipping from origin and delivery to final destination its own arrangement with a free choice of shipping line, and clearing & forwarding agent

Additional Information

- Today approximately 65% of all container import shipments to Ethiopia are subject to Multi Modal regime and shipped with ESL.
- There are approximately 150 existing exemptions given to Investors and Projects in Ethiopia





Import lead time

Transit Time- Working days ex Djibouti to Addis Ababa (estimate)



Free port storage (Djibouti) period: 8 days

Container demur-rage free time: 10 - 30 days (depending on shipping line)

Detention free time for offloading at final destination: 6 hours (according to new Ethiopian regulation)

ROAD : DJIBOUTI / ADDIS ABABA (estimate) in days

Total delivery time from receiving full set of documents

12 days

Empty return to Djibouti

4 days

GLOBAL TRANSIT TIME + RETURN

16 days



Export Services

- Offering export with all major Shipping Lines calling Djibouti
- Positioning of empty containers 'ex works' in Ethiopia
- Export customs clearance
- Transport from factory to CY Djibouti
- Transit clearing & handling in Djibouti

Export process





References

Major clients

- Heineken
- Krones/SDV Germany
- Huawei
- Habesha Brewery
- Shints Textiles
- Layne Drilling
- EEPKO
- UNICEF
- GAIN PRO

Project sector

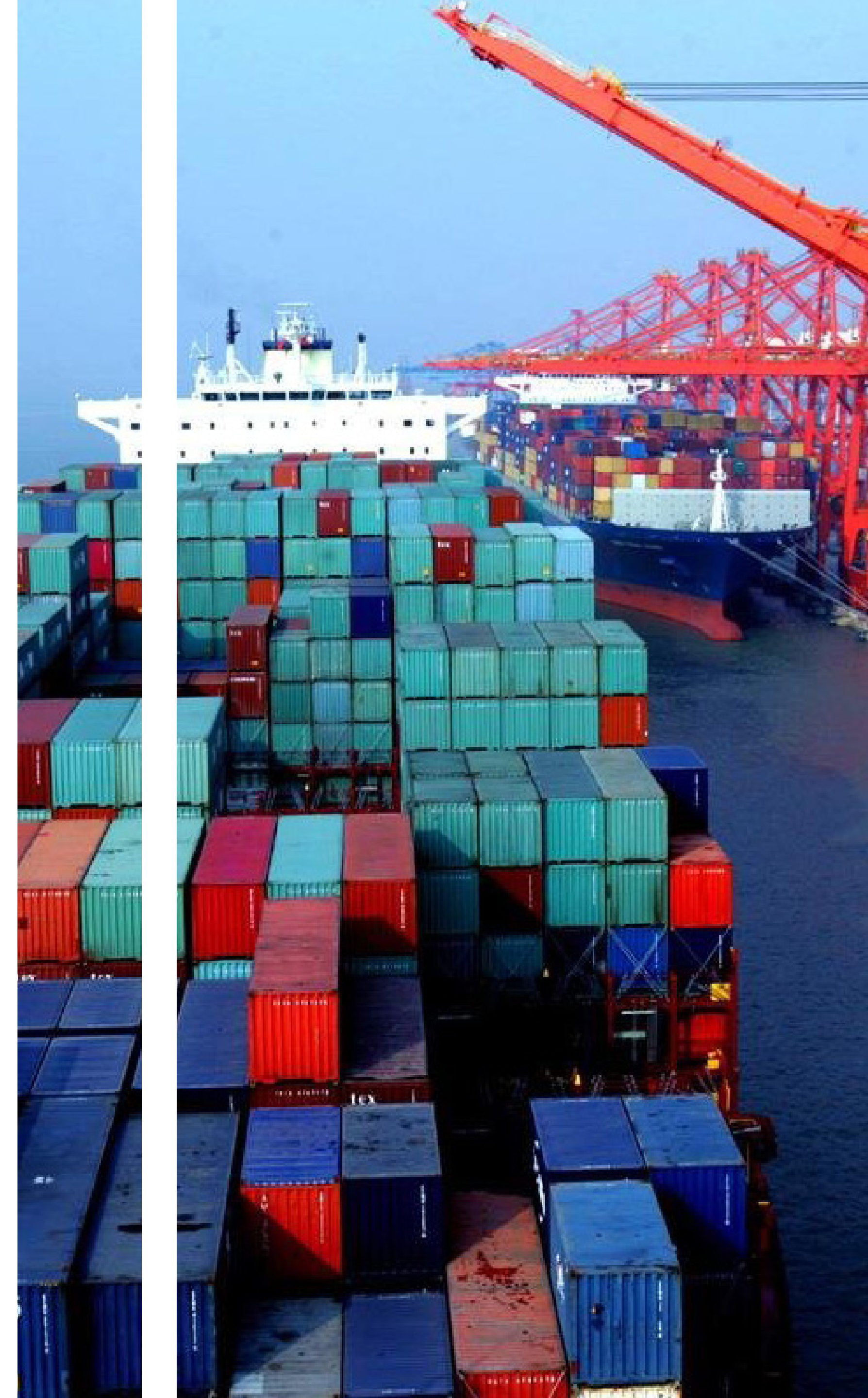
- Brewery
- Sugar Processing
- Oil & Gas
- Mining
- Power Generation
- Power Distribution





Communication

- **Daily tracking schedule updates**
- **On-line tracking data**
- **Email / telephone correspondence**
- **Weekly Supply Chain / Operations Meeting**
- **Monthly Finance Meeting / Account reconciliation**
- **Monthly or quarterly KPI Review Meeting**
- **Annual Contract review meeting**





Some of our Clients

Engineering/Govt Services/fashion

Oil & Gas

Food & Beverages



HALLIBURTON



DIAGEO





Our Key contacts in Ethiopia

Name	Position	Email address	Tel	Mobile
Kaushal Ranpara	Logistics Director	kaushal.ranpara@clslogistics.com	+251 11 57 0600	+251 930 033 751
Goitom Asfaw	Operations Manager	goitom.asfaw@clslogistics.com	+251 11 570600	+251 911516485
Teodros Abraham	Managing Director	teodros.abraham@clslogistics.com	+251 11 570600	+251 911 200325

